



The Newsletter of the Yahara Lakes Association

MAY 2014

TIPS FROM A SHORELINE RESTORATION PROJECT

By David Bohl - YLA Board Member

The lake will let you know when it is time for a new shoreline. In our case, it was a combination of a crumbling poured concrete "seawall" that had become an eyesore, and the slowly developing sinkholes that were increasingly difficult to fill with dirt and stone from the local hardware store. Whatever your motivation, our story should help make your project go smoothly when your shoreline tells you it is time.



Lake Monona shoreline before restoration.
Photo credit: David Bohl

There are a handful of local contractors willing to bid shoreline repair work, and we found variety in both cost and scope of services. Cost considerations are obvious and scope will be dictated in large part by your desired shoreline. However, one item we recommend you include in your scope of services is that your contractor handles all permitting with the Department of Natural Resources.

Despite some very obvious erosion, our contractor informed us from the outset that a permit from the DNR was not automatic. A cursory review of the permitting process indicated obtaining a permit was not impossible for a layperson, but we were happy to let an experienced contractor negotiate this detail. In our case, the "energy calculation" was not sufficient to automatically qualify for a permit, and the contractor's "letter of need" ensured that the permit was obtained in a timely manner.

Another consideration is whether to execute the repair from land or from water. In some cases, a crane arm on a barge is the only option, but thanks to the kindness of some neighbors we were able to get relatively heavy equip-

(Continued on page 2)

Mark Your Calendars

JUNE 17, 2014

YLA ANNUAL DINNER AT
BLACK HAWK COUNTRY CLUB

FOR MORE LAKE EVENTS
VISIT WWW.YAHARALAKES.ORG

INSIDE THIS ISSUE:

SHORELINE RESTORATION	1-2
NON-EMERGENCY CALLS	2
LAKES & WATERSHED COMMISSION UPDATE	3
REAL ESTATE UPDATE	3
ANNUAL DINNER EVENT DETAILS	4
ANNUAL DINNER RSVP	5
HISTORIC TAVERNS - A BEER WITH A VIEW	6-8
CURRENTS	9

**THANK YOU TO OUR
CORPORATE MEMBERS
FOR THEIR SUPPORT :**

- AMERICAN FAMILY INSURANCE
- BISHOPS BAY COUNTRY CLUB
- BLACKHAWK COUNTRY CLUB
- BLUE CRANE BOAT WORKS LLC
- BOATHOUSE OF MADISON LLC
- CAPITOL TRAVEL SERVICE
- CAPTAIN BILL'S
- CHRISTY'S LANDING
- D.L. ANDERSON
- DRAKE & CO. STAFFING
- ENDRES MANUFACTURING CO.
- FIRST WEBER - JAMES IMHOFF JR
- FOUR LAKES YACHT CLUB
- FRIENDS OF PHEASANT BRANCH
- HOMBURG CONTRACTORS, INC.
- JOE DANIELS CONSTRUCTION CO.
- MANKE ENTERPRISES
- MARINER'S INN
- MIDDLETON BOAT HOUSE CO.
- NATIONAL GUARDIAN LIFE INS. CO.
- NAU-TI-GAL
- PADDLEBOARD SPECIALISTS
- PINCKNEY PLACE CONDOMINIUM ASSOC
- RUTABAGA PADDLESPTS
- SPECTRUM BRANDS
- SPRINGERS OF LAKE KEGONSA
- STARK COMPANY - LOUISA ENZ
- WACONIA PARK OWNERS ASSOC.
- WATER EDGE OWNERS ASSOC.
- WESTPORT MARINE/BETTY LOU CRUISES
- WICKCRAFT MANUFG CO. INC.

**PLEASE SUPPORT THE
BUSINESSES THAT
SUPPORT YLA!**

TIPS FROM A SHORELINE RESTORATION PROJECT con't.

By David Bohl - YLA Board Member

(Continued from page 1)

ment into our backyard. Our repairs were pretty invasive and the stability of working from land was an obvious benefit, but a barge seems as though it would be sufficient if there was limited excavation.

With a mini-excavator parked in the backyard and a "Bobcat" moving material to and from the shoreline and/or street, a crew of four workers had our "seawall" excavated by the end of day one. Days two, three and four involved the placement of both functional and decorative rock, and during this phase the talent of the mini-excavator operator was both obvious and important to the final product.

The rebuilding involved the placement of large boulders at the water level to serve as the first line of defense, medium sized boulders at a forty-five degree pitch as reinforcement, and smaller cobblestones at the top that should rarely be reached by either ice or lake level. We also elected stacked limestone on top of the cobble that are only for decorative and sitting purposes.

Due to some unusually cold and rainy December weather, our backyard took a beating from the heavy equipment. While we look every day for the rare combination of both sun and rain so our new grass will grow, the resulting shoreline is well worth the temporary disturbance.

If anyone would like to discuss our process or inquire as to our contractor, please do not hesitate to contact me at info@yaharalakes.org.



Lake Monona shoreline after restoration. Photo credit: David Bohl

NON-EMERGENCY LAKE CONTACT

By Dane County Marine and Trail Enforcement

Please update your cell phone and home directory contacts for non-emergency lake contacts. If you are on the water and have a non-emergency to report, call:

Non-Emergency Dane County / City of Madison: 608-255-2345

Thank you!

DANE COUNTY LAKES & WATERSHED COMMISSION UPDATE

By Mike Gerner, YLA Board Member and Lakes & Watershed Commission Member

As the YLA appointee to the Dane County Lakes & Watershed Commission, I wanted to provide an update on the Commission's focus areas for 2014. At the annual planning retreat for 2014, the Commission decided to reorganize the committee functions into specific work groups addressing key concerns impacting the County's waters. As a result of the brain storming session, the Commission Members selected 3 areas for focused attention. Those areas are:

- Reduction of Phosphorus in our water bodies
- Reduction of Salt entering our waters
- Water Levels – Enhancing the ability to control the dangers of high water levels

The Work Groups have just begun to gather data needed to begin to understand the challenges and potential solutions to these issues.

Another significant role of the Commission is to make budget recommendations for the management and protection of the County's waters, including public safety issues. The L&WS Executive Committee coordinates with other Commission Committees and County departments, and takes the lead on developing the annual budget recommendations.

At its April meeting, the L&WS Commission elected a new Chair. Long time commission member Rebecca Power has accepted the leadership position. Rebecca is a Water Outreach Program Manager for the University of Wisconsin-Extension. She has been with UW-Extension working on natural resource issues for over 10 years. Previously, Rebecca has worked for the US Fish and Wildlife Service and a private consulting firm restoring savannas and wetlands. For more information about Dane County's Lakes & Watershed Commission go to www.danewaters.com/about/

YAHARA LAKES REAL ESTATE SALES TO-DATE IN 2014

By Louisa Enz, YLA Board Member and Stark Company Realtor

Real Estate Sold on the Yahara Lakes so far in 2014...

Address	Price	Total Assess	Total Finished Sq Ft	Total Baths	Bdrms	Lake/River
5006 LAKE MENDOTA DR	\$1,340,000	\$1,029,300	3,152	4	3	Mendota
3012 WAUBESA AVE	\$730,000	\$587,900	2,505	3	4	Waubesa
3236 BROOKLYN DR	\$690,000	\$667,400	4,323	4	4	Kegonsa
2071 SKYLINE DR	\$635,000	\$682,500	2,632	4.5	3	Kegonsa
5110 CARD AVE	\$514,000	\$442,700	2,735	4	3	Waubesa
212 CARD AVE	\$450,000	\$446,100	1,744	2	3	Waubesa
2928 WAUBESA AVE	\$423,600	\$502,900	1,676	2	3	Waubesa
712 WEST SHORE DR	\$355,000	\$306,800	2,143	2	3	Monona Bay
2946 TRACY LN	\$350,000	\$348,600	2,600	2	3	Kegonsa

**Information provided by Louisa Enz, Stark Co. Realtors and the South Central Wisconsin MLS*

ANNUAL DINNER MEETING - DATE CHANGE TO JUNE 17

By Dick Adler and Joe Tisserand, YLA Board Members and Special Event Committee Members

All YLA members are cordially invited to attend the YLA Annual Dinner Meeting on **Tuesday, June 17** (please note the date change from the previously reported June 24 to June 17). Because of positive comments from attendees at last year's event, we will again host the Annual Dinner Meeting at the beautiful Blackhawk Country Club.

Refreshments will commence at 6:00 p.m. with a fabulous steak and shrimp dinner at 7:00 p.m. and an informative presentation to follow.



Our guest honorees and speakers include Jeff Endres, Yahara Pride Farms and Corey Zarecki, Director of Envision - Gundersen Health System. Corey is responsible for the technical engineering support and operations on projects such as Gundersen's Digester Operation in Springfield. Corey will present the following regarding the Springfield Digest Operation and its collaboration with the Yahara Pride Farms organization:

- Why Gundersen Health Systems, headquartered in La Crosse, is constructing a digester near Madison
- Briefly discuss the general design, operation and function of the digester site
- Discuss the Yahara Pride Farms involved
- Briefly review the measures that have been employed to help minimize the chances of pipes breaking and preventing spills
- Products that are being produced along with where and how they are being distributed
- Project benefits for Gundersen Health System, the farmers, and the region
- A question and answer session will follow Corey's presentation



In addition, to this engaging presentation, outstanding door prizes will be presented to many lucky attendees (last year, 1 out of every 2 attendees received a wonderful door prize!).

This is an ideal time to get together with other waterfront property owners and talk about our wonderful and valuable chain of lakes. It will be a fun and informative evening, so mark your calendar and bring along a few of your neighbors.

We look forward to seeing you on **Tuesday, June 17!**

ANNUAL DINNER MEETING INVITE AND RSVP

By Joe Tisserand and Dick Adler, YLA Board Members



YLA ANNUAL DINNER MEETING
TUESDAY, JUNE 17, 2014

Please join us for an evening to remember!

Blackhawk Country Club Madison, WI

Refreshments 6:00 p.m.

Steak & Shrimp Dinner 7:00 p.m.

Awards Presentation & Prize Giveaway 7:30–8:30 p.m.



◇ **Special Honoree Guests and Speakers** ◇

◇ **Jeff Endres, Yahara Pride Farms & Gundersen Health System's Springfield Digester** ◇

Meet other lake property owners ◇ Meet your Board of Directors ◇ Learn more about YLA

RESERVATIONS REQUIRED— RSVP by JUNE 10, 2014

RSVP and pay by credit card at www.yaharalakes.org

or

RSVP and pay by check with this form:

Attendee Name(s): _____

Number of Dinners: _____ x \$40 = \$ _____

Mail check and this form to: **Yahara Lakes Association, Ltd.**
P.O. Box 22
Waunakee, WI 53597

HISTORIC TAVERNS - A BEER WITH A VIEW

By Don Sanford, Yahara Lakes Historian

Long before Madison's taverns went dry in 1917, her thirsty citizens discovered that beer tastes better with a lakefront view.

In the 19th century, the majority of waterside "fun spots" on the Yahara chain were located on Lake Monona. Even then, location was everything. All were outside the city limits and therefore not subject to an 1878 Madison ordinance banning liquor at picnics. Fortunately these parks, where a city dweller could enjoy a cool beer and a summer breeze, were easily reached from downtown Madison by steamboat.

Scheutzen Park (2200 block of Lakeland Avenue) Around 1871, a group of Germans purchased 26 acres of land just east of today's Yahara Place Park. This seasonal venue was a combination rifle range, dance hall and beer garden. Customers arriving by boat docked at the park's 600-foot pier located near the foot of Dunning Street. Visitors could purchase beer, though drunkenness was not permitted. The park closed in 1902 and was developed as the Lake Park and Park View subdivisions.

The Tonyawatha Hotel (4500 block of Winnequah Road) The Tonyawatha Hotel opened in 1879. This was not a dance hall or beer garden. Guests at Tonyawatha, usually from southern states, came to spend the summer months drinking water thought to be medicinal from a nearby spring. After the hotel burned to the ground in 1895, the land was platted for cottages.

Oak Park (4811 Tonyawatha Trail) Madison hotel owners Henry and Mathilda Schroeder opened their Oak Park resort about 1880. Oak Park had a water slide, a "grotto" and cottages for rent. It was nothing like the Tonyawatha, its genteel neighbor to the east. Occasionally, things happened in Oak Park's cottages that landed the Schroeders in jail. Business was so good that Mr. Schroeder purchased his own steamboat in 1891 to carry customers nonstop to and from downtown Madison.

Winnequah (5700 Block of Tonyawatha Trail) Captain Frank Barnes built a dance hall, bowling alley and picnic area here in 1870. He called it Winnequah, which he said meant "pure water." That, and possibly lemonade, was all that he served. This was the first resort on Lake Monona.

Hollywood at the Beach (2700 Block of Waunona Way) Here's where folks came to have fun. In 1901, the Askew brothers built a dance hall and picnic ground at Esther Beach named for Charles Askew's daughter, Esther, who died in childhood. Alva "Al" Thompson built a new dance hall after he took over the business in 1920. In 1944, Ann and LeRoy "Andy" Anderson, owners of the Hollywood Inn, bought Esther Beach, renaming it Hollywood-at-the-Beach. Sam J. Corona and Tony Salerno bought both properties in 1945 and ran them as dance halls until 1952.

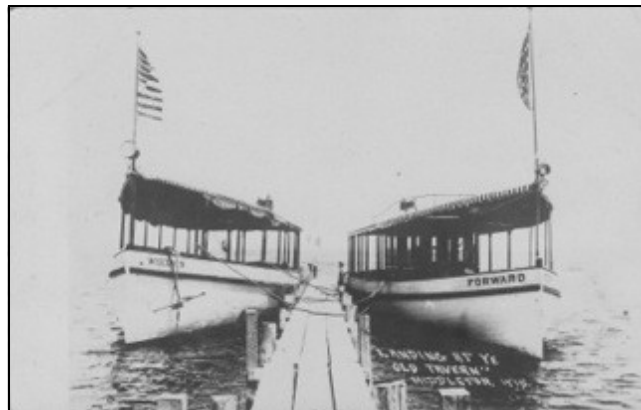
The Malt House (1500 Block of Sherman Avenue across from Filene Park) Several breweries operated in a brick building that once stood at the location of the current office building. The first one opened in 1852. By 1877, this was Rodermund's Brewery, which included a picnic ground in today's Fullers Woods. It also had a pier where sailors occasionally stopped to pick up a keg of beer for a long sail to the other end of the lake. In the early 1900s, Madisonian families trying to enjoy the simple pleasures of a day at Tenney Park often had to deal with a procession of "tipplers and drunkards" stumbling from the saloon at the malt house to the park's shady groves. During the 1930s, a succession of nightspots—the Dugout, the Tunnels and the Brass Rail - operated in the old building.

HISTORIC TAVERNS - A BEER WITH A VIEW con't.

By Don Sanford, Yahara Lakes Historian

(Continued from page 6)

Picnic Point Between 1865 and 1868, John Boeringer had a “refreshment and dancing hall” here where “pleasure parties could be completely accommodated.” Boeringer served wine from his Ohio vineyards. Though you could travel to his pavilion on a long carriage ride from downtown Madison, most favored the trip across the lake aboard the steamer *City of Madison* or the schooner *St. Louis*.



Ye Olde Tavern
Photo credit: Don Sanford archives

Known today as the Club Tavern, the photo is Ye Old Tavern from 1902 to 1921. The tavern's new owner happened to own some lots on Middleton Beach and around 1910, built a pier and laid a road from the tavern's back door straight as an arrow to the lake, about a half-mile away. “If you build it, they will come...” Boatloads of thirsty Madisonians made the trip from Bernard's Landing Ye Olde Tavern during the summer months.

Pheasant Branch (The Lakeside) In the 1890s, Pheasant Branch was a thriving town located roughly near the corner of Branch Street and Century Avenue. Mendota sailors could land at a nearby pier and refill their empty kegs at the local

brewery for the long voyage across the lake.

2nd Ward Beach Whether by design or convenience, it's rumored that a structure near the creek was used for dances during the 1920s and '30s. Its secluded location on the lake at the end of a dirt road made it perfect for the Madison partiers who came here to gamble and slug bootleg liquor.

Westport - The entertainment center of Lake Mendota After Madison taverns closed at midnight on June 30, 1917, thirsty Madisonians looked for a place to have fun and found it in Westport. Entrepreneurs here turned Madison's dry ordinance into a business opportunity, creating a vibrant underground business community. Newly completed paved roads, launches and motorboats carried thirsty customers back and forth across the lake in the summer. During the winter, Mendota's ice became a swift, though occasionally treacherous, highway for vehicles and iceboats making the crossing from downtown Madison and the UW campus. Around 1924, George Theissen opened a roadhouse named “The Blue Bill Park Club” just behind what is now Mazanet Marina. A few years (and a few arrests) later, he sold the dance hall to Mr. and Mrs. Gustave Haack.

In the Wisconsin State Journal ad (to the right) Mr. and Mrs. Gustave Haack's dance hall in Blue Bill Park operated under a number of names during the 1930s. Madison newspapers featured advertisements promoting “mixers” or “old fashioned dances” at “The Pavilion” or “Blue Bill Park Club-house,” different names for the same entertainment venue, eventually closed down by Dane County around 1939.



Wisconsin State Journal 5/18/1935
Photo credit: Don Sanford archives

HISTORIC TAVERNS - A BEER WITH A VIEW con't.

By Don Sanford, Yahara Lakes Historian

(Continued from page 7)



*Wisconsin State Journal 12/6/1935
Photo credit: Don Sanford archives*

Bernard's Park & Ambassador Club (718 Woodward Drive)

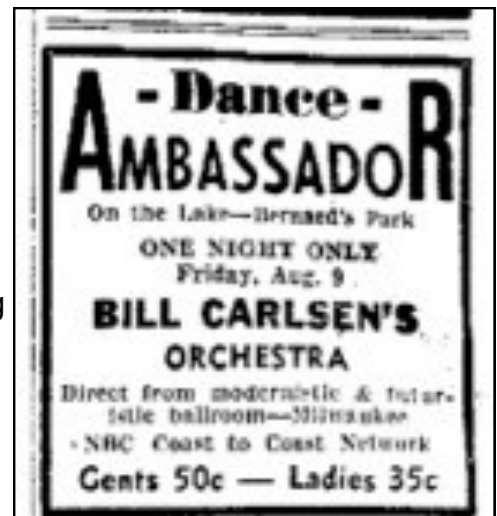
First named Mendota Park, Bernard's Park opened in the spring of 1906. Folks came here for company picnics, to roller-skate in the pavilion or ride the water toboggan. In 1933, the old dance pavilion reopened as the Ambassador Club. Winterized and enlarged, with room for 150 tables, the old roller rink operated as a dance hall until 1935, when it faded into the foggy haze of Lake Mendota history.



*Gettelman's Beer Coaster
Photo credit: Don Sanford archives*

Across the river, the building known today as the Mariners Inn first opened as the Varsity Club around 1930 and quickly became a popular spot for Madisonians and UW students. In 1936, under a new owner, this became the Club Monterey. Almost overnight, reports of gambling, fights and "come-on girls" became front-page news in the *Wisconsin State Journal* and *Capital Times*. In 1939, this became Jack Burke's supper club. The former speakeasy quickly became famous for his steaks and homemade French fries..

Further up the river just past the Westport Bridge, the Hanson family opened a little store in 1906. Later known as Hanson's Tavern, this was both country store and social center for all kinds of activities—both legal and illegal—during the 1920s and '30s.



*Wisconsin State Journal 8/5/1935
Photo credit: Don Sanford archives*

The Ambassador Club featured Gettelman's \$1,000 Beer as well as Atlas Special Beer, Fauerbach Beer, Mansfield-Caughey Ice Cream and Silver Springs Soda.

The Ambassador Club aimed for respectability, promoting well-known bands for dancing and offering a varied dinner menu.

While I've heard that some nearby cottages on Woodward Drive were used for something other than wholesome activities, these remain unsubstantiated rumors. While titillating, as a good historian, it would not be appropriate to repeat those stories in a family publication like this. You'll just have to use your imagination and consider what might have happened on a dark summer night on the distant shore of Lake Mendota.

CURRENTS



► Come to the Center for Limnology **Hasler Lab open house** on Friday, June 20th, from 2pm to 6pm, for a tour of the science of freshwater research. Find out how the research conducted at the CFL is being used to better understand, protect and improve Wisconsin's lakes, rivers and streams. Learn more about the open house at <http://limnology.wisc.edu> where you can also sign up for the CFL blog and read past newsletters.

► Find out about the how you can become part of Clean Lakes Alliance **citizen-monitoring pilot** program. Measure near-shore water qualities, help researchers better understand how algae blooms develop, and raise community awareness about changing beach conditions. To learn more, contact Katie Van Gheem at 255-1000 or kathryn.vangheem@cleanlakesalliance.com.

Want to help out with a **lake-user survey**? If you're interested in donating some hours (at your favorite lake-access point and based on your own schedule preferences), please email Paul Dearlove at paul@cleanlakesalliance.com.

► **Dane County's "Take a Stake in Our Waters"** is now a year-long event, not just a weekend. You, and your friends, neighbors and coworkers can join already planned events, list your event, and/or volunteer for the lake or stream nearest you. Go to www.takeastake.org to find out more.

► Interested in adding a **rain garden** to keep water where it lands in your yard, not in our lakes and rivers? Find your design plans, what types of plants are best for a shady or sunny yard and "how to" manuals at: www.cityofmadison.com/engineering/stormwater/raingardens

► **Help keep excess nutrients out of our waterways.** Before you fertilize, have your soil tested for what it needs. Collect 2 cups of soil in multiple locations from the top 4" of your lawn and send or take your sample to the UW-Madison Soil Testing Lab. The cost is \$15. You will get a report on soil pH, percent organic matter, phosphorus and potassium, and fertilizer recommendations within 2-3 weeks. Everything you need is on the lab's website uwlab.soils.wisc.edu/lawn-garden/, including the submission form and sampling instructions.

► **"Beyond the Water's Edge" photography contest and exhibition** is a celebration of the Dane County Lakes and Watershed Commission's 25th anniversary. You can visit the display at the Opera House Art Gallery in Mt. Horeb during May, and at the Crossroads Café in Cross Plains during June.

► The **Tenney Lock** is open Thursday through Sunday in May-September and Sat/Sun in October. The hours vary so check the schedule at their website. You need a permit going upriver from Monona to Mendota--\$5/day or \$30/annual. www.countyofdane.com/lwr/parks/tenney_lock.aspx

► **Your Lake Property Number.** Help out with emergencies on the lakes by getting your lake property number. The numbers have been cross-referenced in the 911-computer system with property street addresses. By posting your number at the end of your pier, boaters in distress can identify their location and the sheriff's lake patrol can match your street address to a lake location for a quicker emergency response. Contact Sue Jones, Lakes and Watershed Commission at 224-3764 to find out more information.

Visit www.yaharalakes.org for all current events! Please send us your ideas and events for future postings to info@yaharalakes.org



PO BOX 22
WAUNAKEE, WI 53597

Yahara Lakes Association, Ltd. is a non-profit organization dedicated to representing lake property owners and advocating for the vitality of the Yahara chain of lakes so that all citizens may enjoy them.

Yahara Lakes Association, Ltd. Board of Directors

2014 Officers:

President - Dick Pearson
President Elect - Joe Tisserand
Secretary - Ray Potempa
Treasurer - Michael Gerner
Past President - Carol Gillen, Lake Views Editor

2014 Board Members:

Dick Adler	Chuck Gates
Doug Bach	Luke Hutchins
David Bohl	Allan Levin
Roy Carter	Bob Miller
Louisa Enz	Donna Paulnock
Bill Fitzpatrick	Sal Troia
Caroline Fribance	

2014 Advisors:

James Tye



VISIT OUR WEBSITE
www.yaharalakes.org

To contact any Board Member or Advisor: phone: 239-1664 or email: info@yaharalakes.org